



# Sitecore Intranet Portal 3.2

# Active Directory Integration in Sitecore Intranet Portal

*A Practical Guide for SIP Administrators*

## Table of Contents

Chapter 1	Introduction.....	3
1.1	Overview of the Sample Code .....	4
Chapter 2	Using the Sample Code .....	5
2.1	Web.config Settings .....	6
2.2	Configuring the mapping .....	7
2.2.1	Mapping AD properties to Sitecore user profile properties .....	7
2.2.2	Mapping Sitecore user profile properties to SIP profile item fields .....	7
2.3	Setting the canteen when importing users .....	8
Chapter 3	Setting up security.....	9
Chapter 4	Setting Up Single Sign-On for AD Users .....	10
Chapter 5	Troubleshooting.....	11
Chapter 6	Download Sample Code .....	12

# Chapter 1

## Introduction

This article focuses on integrating Active Directory users' information into Sitecore Intranet Portal. Provided sample code simplifies this integration and allows developers to customize the code as necessary.

To make information stored in AD domain available for SIP, you must install the [Active Directory module](#).

Usage of the standard Active Directory module coupled with the IntranetUpdateUserProfile pipeline and the sample code has several advantages:

- Built-in phonebook integration. The standard phonebook in Sitecore Intranet Portal uses the information stored in SIP user profiles (items under the "/sitecore/content/intranet/home/userinfo" folder). Replication of the AD information to the profiles is implemented as a part of the sample code.
- Easy control over the value assignment to various SIP User Profile fields as a part of the replication. For example, the sample code sets the SIP user preferred canteen based on the user's Active Directory groups.
- Increased flexibility. For example, the code could be extended to query multiple Active Directory servers.
- Full control. You can modify the code to make it work as you need for a specific customer. For example, you can set the user's "Refers to" field of the SIP User Profile, based on AD groups.

## 1.1 Overview of the Sample Code

The sample code consists of two classes:

1. The UpdateProfileProcessor class which is run by the standard IntranetUpdateUserProfile pipeline and sets properties of the SIP Profile object based on a CMS custom profile properties assigned by the AD module.
2. The UpdateProfileEventHandler class which is activated by the 'security:loggedIn' event and starts the IntranetUpdateUserProfile pipeline.

## Chapter 2

### Using the Sample Code

Set up the Sitecore Active Directory Module using the [Active Directory Module Administrator's Guide](#) as the first step. The UpdateProfileProcessor class requires you to configure the AD module profile provider and set up mapping of the AD properties to the custom properties of the standard CMS user profile (see the **Advanced Profile Configuration** chapter in the [Active Directory Module Administrator's Guide](#)).

## 2.1 Web.config Settings

To use the IntranetUpdateUserProfile pipeline functionality of the sample code you should modify the web.config file:

1. Add the following processor definitions to the <intranetUpdateUserProfile> section of the <sitecore/pipelines> element:

```
<processor type="Intranet.Samples.UpdateUserProfile.SetAccessRights,
Intranet.Samples.LDAP" />
<processor type="Intranet.Samples.UpdateUserProfile.UpdateProfileProcessor,
Intranet.Samples.LDAP" />
```

2. Add an event handler to the "security:loggedIn" event to update the SIP user profile fields every time the user logs in the system. Paste the following event definition inside the <sitecore/events/event name="security:loggedIn"> element:

```
<handler type="Intranet.Samples.UpdateUserProfile.UpdateProfileEventHandler,
Intranet.Samples.LDAP" method="OnLoggedIn" />
```

### Important:

If you skip the second step, the SIP user profile fields will be updated only when the AD user logs in for the first time and any subsequent AD properties changes will not be reflected in the SIP user profile.

## 2.2 Configuring the mapping

The UpdateProfileProcessor in the sample code maps user profile properties to the relevant fields on SIP profile items. For this to work, you must first configure the AD module to map AD properties to user profile properties in Sitecore.

### 2.2.1 Mapping AD properties to Sitecore user profile properties

To configure several custom properties in the <properties> group of the <profile> element, see the **Configuring the Custom Properties** chapter of the [Active Directory Module Administrator's Guide](#).

For example:

```
<add type="System.String" name="DisplayName" customProviderData="ad|unicode
string|displayName" />
<add type="System.String" name="Phone" customProviderData="ad|unicode
string|telephoneNumber" />
<add type="System.String" name="Mail" customProviderData="ad|unicode string|mail" />
<add type="System.String" name="Office" customProviderData="ad|unicode
string|physicalDeliveryOfficeName" />
```

In this example the last line maps the AD physicalDeliveryOfficeName property to the custom property of the standard CMS user profile (Office).

### 2.2.2 Mapping Sitecore user profile properties to SIP profile item fields

Now you can map custom properties of the standard CMS user profile to fields on the SIP Profile item.

This is done by adding a new Intranet.UpdateProfileFieldMap setting to the web.config file (in the <settings> group of the <sitecore> element).. This setting specifies a delimited list of mappings:

```
<!-- Pipe delimited list of fields to map Sitecore profile property to SIP profile field
<SIP field>,<sc custom property>|... -->
<setting name="Intranet.UpdateProfileFieldMap"
value="phone,phone|email,mail|name,displayname|canteenName,office" />
```

## 2.3 Setting the canteen when importing users

The sample code sets the user's preferred canteen based on the "office" field of CMS profile. You may want to customize this part of the code because the canteen items paths in Sitecore are currently hard-coded in the sample code. This functionality is implemented by the SetCanteenOnUser method in the UpdateProfileProcessor class.



## Chapter 3

### Setting up security

It's necessary to set up security rights on the following items:

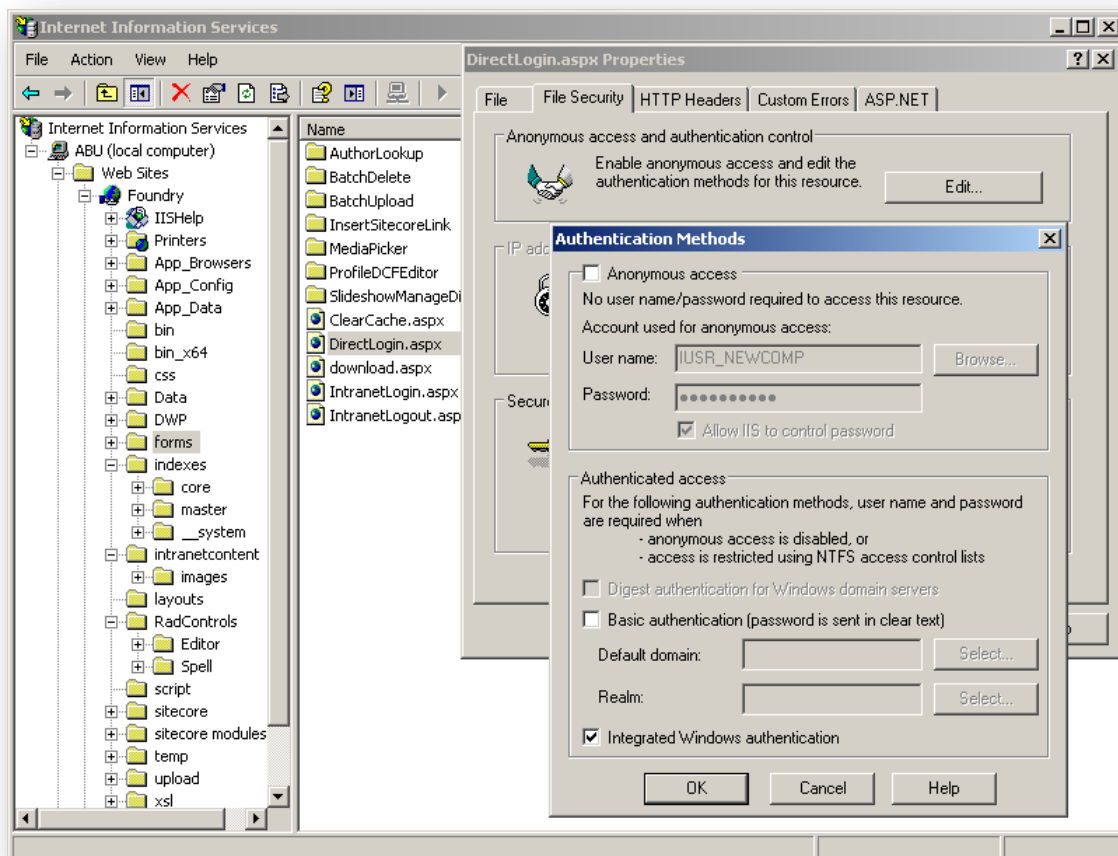
- 1) **/sitecore/content/Intranet/Site Config/Target Groups**: grant read access to Everyone role of AD domain.
- 2) **/sitecore/content/Intranet/Home/UserInfo**: deny write, rename, create and delete access to Everyone role of AD domain (like it's done for extranet\Everyone). All necessary access rights to individual profile items will be granted by SetAccessRights processor.
- 3) Consider assigning the "Sitecore/Client Page Editor Only" role to appropriate roles/users from your AD domain to let such roles/users use the Page Editor as frontend editor.

## Chapter 4

### Setting Up Single Sign-On for AD Users

To set up a single sign-on for AD users, perform the following actions:

1. In the web.config file, change the "loginPage" attribute of the site "intranet" to "/forms/DirectLogin.aspx"
2. In the IIS settings, browse to the /forms/DirectLogin.aspx properties, clear the "Anonymous access" check box and select the "Integrated Windows Authentication" check box.



## Chapter 5

# Troubleshooting

In critical situations, the sample code throws an exception with a description of the error. This information is helpful if you run into problems when installing and configuring the module.

## Chapter 6

### Download Sample Code

Follow the link below to download the sample code for this article:

<http://sdn.sitecore.net/Resources/Sitecore%20Intranet%203/Sitecore%20Intranet%203,-d-,2/Samples.aspx> .